

SPML INFRA LTD

SPML
Engineering Life

WE BUILD
FOR A BETTER
INDIA

1 Among World's
Top 50 Water
Companies

2 Providing
Drinking Water
to 40 million+
Population

3 20,000+ villages
electrified
under rural
electrification

4 Awarded as
Best Company
in Water
Management

SPML INFRA LIMITED

CIN: L40106DL1981PLC012228

Extracts of the Consolidated Audited Financial Results for the Financial Year ended March 31, 2019

| Sl. No | Particulars | Year Ended 31.03.2019 | Year Ended 31.03.2018 |
|--------|--|-----------------------|-----------------------|
| | | (Audited) | (Audited) |
| 1 | Total Income from Operations | 207663.80 | 211018.73 |
| 2 | Net Profit/(Loss) for the period (before tax, exceptional and/or extraordinary items) | 6218.93 | 4599.08 |
| 3 | Net Profit/(Loss) for the period before tax (after exceptional and/or extraordinary items) | 6218.93 | 4599.08 |
| 4 | Net Profit / (Loss) for the period after tax (after exceptional and/or extraordinary items) | 3973.34 | 5040.31 |
| 5 | Total Comprehensive Income for the period [comprising profit / (loss) for the period (after tax) and other comprehensive income (after tax)] | 3549.78 | 5288.06 |
| 6 | Equity Share Capital (Face Value of Rs.2 per shares) | 819.45 | 819.45 |
| 7 | Reserve (excluding revaluation reserve) as shown in the Audited Balance sheet | 41193.73 | 45672.71 |
| 8 | Basis & Diluted Earnings Per Share (nominal value per equity share Rs.2/- each) (for continuing and discontinued operations) | 10.84 | 13.75 |

Notes: a) The above is an extract of the detailed format of the Consolidated Audited Financial Results for the financial year ended 31st March, 2019 filed with the Stock Exchange(s) under Regulation 33 of the SEBI (Listing Obligation and Disclosure Requirements) Regulations, 2015. The full format of the above Financial Result is available on the Stock Exchange Websites (www.nseindia.com and www.bseindia.com) and on the Company's website at www.spml.co.in

b) The pertinent disclosure, with respect to the impact on net profit /loss, total comprehensive income or any other relevant financial item(s) due to change(s) in the accounting policies, if any, has been made to the Stock Exchange NSE & BSE at their respective websites www.nseindia.com and www.bseindia.com and the same can also be accessed at the Company's Website at www.spml.co.in

c) The Consolidated Financial Results were approved by the Audit Committee and the Board of Directors of the Company in their respective meetings held on 30th May 2019.

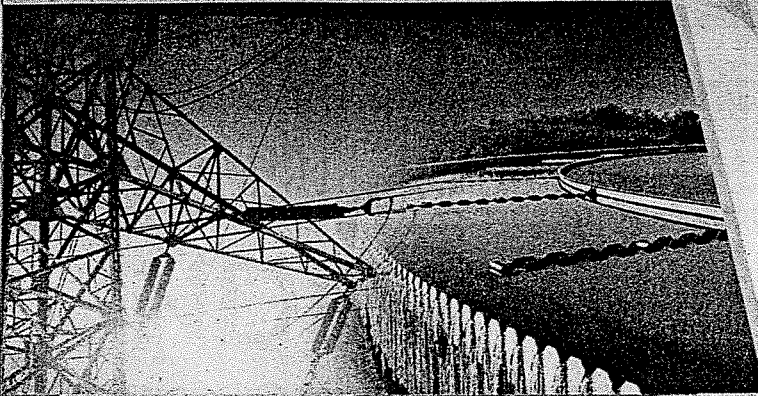
For and on behalf of the Board of Directors
Sd/-

Subhash Chand Sethi
Chairman
DIN: 00464390

Date: 30th May 2019
Place: Gurgaon

SPML INFRA LTD

SPML
Engineering Life



WE BUILD
FOR A BETTER
INDIA

1 Among World's
Top 50 Water
Companies

2 Providing
Drinking Water
to 40 million+
Population

3 20,000+ villages
electrified
under rural
electrification

4 Awarded as
Best Company
in Water
Management

SPML INFRA LIMITED

CIN: L40106DL1981PLC012228

Extracts of the Consolidated Audited Financial Results for the Financial Year ended March 31, 2019

| Sl. No | Particulars | Year Ended 31.03.2019 | Year Ended 31.03.2018 |
|--------|--|-----------------------|-----------------------|
| | | (Audited) | (Audited) |
| 1 | Total Income from Operations | 207663.80 | 211018.73 |
| 2 | Net Profit/(Loss) for the period (before tax, exceptional and/or extraordinary items) | 6218.93 | 4599.08 |
| 3 | Net Profit/(Loss) for the period before tax (after exceptional and/or extraordinary items) | 6218.93 | 4599.08 |
| 4 | Net Profit / (Loss) for the period after tax (after exceptional and/or extraordinary items) | 3973.34 | 5040.31 |
| 5 | Total Comprehensive Income for the period [comprising profit / (loss) for the period (after tax) and other comprehensive income (after tax)] | 3549.78 | 5288.06 |
| 6 | Equity Share Capital (Face Value of Rs.2 per shares) | 819.45 | 819.45 |
| 7 | Reserve (excluding revaluation reserve) as shown in the Audited Balance sheet | 41193.73 | 45672.71 |
| 8 | Basis & Diluted Earnings Per Share (nominal value per equity share Rs.2/- each) (for continuing and discontinued operations) | 10.84 | ~13.75 |

Notes: a) The above is an extract of the detailed format of the Consolidated Audited Financial Results for the financial year ended 31st March, 2019 filed with the Stock Exchange(s) under Regulation 33 of the SEBI (Listing Obligation and Disclosure Requirements) Regulations, 2015. The full format of the above Financial Result is available on the Stock Exchange Websites (www.nseindia.com and www.bseindia.com) and on the Company's website at www.spml.co.in

b) The pertinent disclosure, with respect to the impact on net profit /loss, total comprehensive income or any other relevant financial item(s) due to change(s) in the accounting policies, if any, has been made to the Stock Exchange NSE & BSE at their respective websites www.nseindia.com and www.bseindia.com and the same can also be accessed at the Company's Website at www.spml.co.in

c) The Consolidated Financial Results were approved by the Audit Committee and the Board of Directors of the Company in their respective meetings held on 30th May 2019.

For and on behalf of the Board of Directors

Sd/-

Subhash Chand Sethi
Chairman

DIN: 00464390

Date: 30th May 2019

Place: Gurgaon

Registered Office: F 27/2, Okhla Industrial Area, Phase II, New Delhi - 110020

Tel: 011-26387091 • Fax: 011-26386003 • E-mail: info@spml.co.in Website: www.spml.co.in