



**SPML - TOTAL WATER SOLUTIONS PROVIDER**

SPML championed the concept of 'Design Build Operate' mode of projects in the water sector. We are also credited with pioneering the process of aligning with nature to bring water from natural resources to homes. We have been responsible for laying over 2500 kms of pipeline across cities and towns in India. We have demonstrated a high capability in executing large water projects individually and are a major partner in India's green revolution. SPML provides turnkey water solutions ranging from Headworks to Distribution Systems comprising aspects such as canals, irrigation network, hydrology, reservoirs and distribution.

## Our water footprint:

### Engineering - Procurement - Construction

Potable/Industrial Water Supply | Intake Structures | Transmission Mains | Pumping Stations | Storage Reservoirs (Elevated/Ground Level) | Water Treatment Plants | Distribution Mains | Desalination Plants | O&M of Water Supply Schemes | Waste/Sewage Treatment Plant | Refurbishment of Pipelines | Sewage Pipeline | Storm Water Drainage | Pumping Stations | SCADA | Instrumentation

### Public Private Partnership

SPML is a preferred partner in complete water cycle management. We have spearheaded, executed and managed high-value turn-key projects in the water sector, on a Public Private Partnership (PPP) & Build-Own-Operate-Transfer (BOOT) basis. SPML has engaged with clients/utilities on various water management initiatives and takes pride in its leadership in India's first Integrated Water Management Contract (Source to tap) for Latur Municipal Corporation. SPML facilitates clients and utilities to reduce water and related energy expenses by developing end-to-end water management plans.



## Making water take many shapes

### Water Sourcing Solutions:

Development of Independent Water Sources | Bulk Water Supply | Transmission Systems | Augmentation of existing Water Supply Schemes

### Integrated Water Management Solutions:

Water Distribution Solutions | End-to-End Water Management Solutions | Performance Assessments | Asset Management | Demand Management | Non-Revenue Water Reduction | Utility Management | Network Analysis | Metering Solutions | Operations & Maintenance of Water Supply Schemes



## Milestones with water:

### SPML's Pali pipeline project emerged as a boon to the residents of Pali city

The Pali Water Pipeline Linkage project has resolved the water woes of Pali city; Benefiting 531 villages, 10 towns with population of over 8 lakhs - and also a resultant saving of INR 120 Mn: USD 2.5 Mn annually for PHED, Rajasthan by overcoming leakages of the existing canal system.

### Racing ahead of the curve in Bakreshwar, West Bengal

The Water Intake & Water Supply Package was a project for the Bakreshwar Thermal Power plant in West Bengal. It focused on designing & building, with subsequent operation & maintenance for 5 years. The project was completed in April 1999, a whole three months ahead of schedule. This was an OECF, Japan Funded Project.



### **Distinction of being the first private provider in India to be awarded a Comprehensive Underground Sewerage Scheme - Design, Build, Operate & Manage Model**

Underground Sewerage Scheme under JNNURM for Mira Bhayandar Municipal Corporation; providing, laying and commissioning 107 kilometers of sewer lines; design, construction and commissioning of 10 Pumping stations and 10 Sewage Treatment Plants (STP) with capacities ranging from 7 MLD to 17 MLD.

### **Single point responsibility for lift canal water supply scheme in Rajasthan**

Rajiv Gandhi Lift Canal Water Supply Scheme - Phase II - Design, Build and Operation & Maintenance of 205 Km of combined conveyance system to drought prone areas in Rajasthan.

### **Showers of blessings for over 10 lakh people across 40 villages in Kerala**

The Treated Water Transmission Mains Project (JBIC funded) located in Meenad, Pattuvam and adjoining villages, Kerala is a treated water supply project that involves laying and erecting Treated Water Transmission Main Lines. Over 10 lakh people spread out across 40 villages will be blessed with clean drinking water. The project is JBIC (Japan Bank for International Co-operation) funded and has been secured in International Competitive Bid (ICB).

### **Unleashing a tidal wave of change for Sawaimadhapur and Karauli**

The water supply project located in the south east region of Rajasthan is a water supply scheme with subsequent operation and maintenance for 5 years. It is powerfully engineered to eventually cater to the entire water requirement of Sawaimadhapur and Karauli. Further, it would also meet 50% of the requirements of Gangapur & Todabhim.



### **Racing to drought prone areas in Saurashtra at the rate of one kilometer a day**

The Saurashtra Pipeline Project (SPP-1) located in Pariej & Kanewal, Saurashtra, Gujarat is a raw water intake project, involving turnkey execution of water intake and pumping stations with a cross country pipeline. It is slated for subsequent operation & maintenance for 24 months. The project holds the distinction of laying over 2000 mm MS pipes at 1 Km/day. The main objective of the project was to transfer the excess water from the southern region of Gujarat to the drought prone areas of Saurashtra.

### **One of the highest pressure pipeline ever used in any water supply project in India - Greater Lunglei Water Supply Scheme**

The task was to pump water up to 880 metres into the mountains of Lunglei, Mizoram. The terrain was rock-jagged, vicious and roads, non-existent.

Laid a 12 km-long pipeline that could withstand a pressure of 135 kg/cm<sup>2</sup>. Built a pumping station 12,000 feet up in the mountains, said to be one of the world's highest single stage pumping station to take water up to Lunglei.

### **Treated water - source for the generation of electricity for the prestigious Commonwealth Games to be held in Delhi, in the year 2010**

Construction of 25 MGD (million gallons per day) Effluent Pumping Station (EPS) at Rithala Sewage Treatment Plant, including twin transmission mains for carrying 33.34 MGD treated effluent to the Power plant; which would light up the Games.

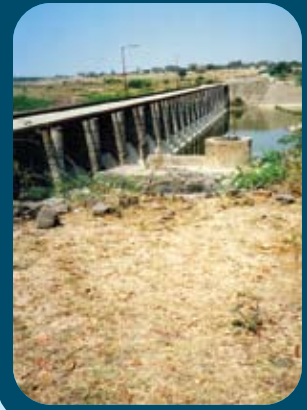
### **The first ever tertiary Sewage Treatment Plant of its kind in India for the reuse of municipal wastewater**

SPML executed Yelahanka Primary/Tertiary Sewage Plant - for the reuse of Municipal wastewater contributing to the environment protection and for a cleaner/better community in association with OTV, France.



### India's first Source to Tap integrated water management contract at Latur

Benefiting the 4.5 lakh population of Latur with hygienic, un-interrupted water supply, 40,000 Water Connections, 600 kms of Distribution system. Metering, billing and collection of water charges from 50,000 plus consumers. Managing 3 water supply schemes, 6 pumping stations, 6 electrical installations, 95 Km of transmission pipelines, 3 WTP's, 2 master balancing reservoirs. Institutional Strengthening and Implementation of IMIS



### Transforming 11 lakh lives with equitable water supply: Integrated Bulk Water supply and water management for Bhiwandi Nizampur city municipal corporation

A bulk water supply project from Pise Weir, Atkhipili, Kanwadi river with distribution to Bhiwandi City. This project is remarkably centered on Concessional Integrated Water Supply through bulk water initiative. The initiative promise is ambitious as it is slated to benefit 11 lakh people with equitable water supply.

### Bulk Water Supply Improvement project for Hubli-Dharwad city

Integrated Management Information system consisting of Network Asset, Billing and Customer Information, Operation & Management and Demand Management for entire Dharwad city.

### 24 x 7 continuous supply of water to the identified wards of Madurai

Pilot water supply project under PPP model (JNNURM Scheme) - Operator Consultancy Activities: Investment planning, rehabilitation planning, operation & maintenance and 24 by 7 water supply with project supervision.



### Success through International collaboration in Delhi

Brought to India for the first time Cured-In-Place-Pipe (CIPP) technology (A no dig trenchless technology) through it's alliance with Insituform for the signature sewer rehabilitation projects in Delhi, for the Delhi Jal Board. The success of the Refurbishment of Trunk Sewer System and Implementation of Related Works in Delhi, has won accolades from all stakeholders.

**Subhash Projects And Marketing Limited (SPML)** is a leading infrastructure development company with more than two and half decades of multi-disciplinary experience in Water, Power, Environment, Infrastructure, Manufacturing and Technology. An ISO - 9001: 2000 certified company, SPML has executed more than 400 projects across India and is currently developing infrastructure projects with projected investments worth INR 150 Bn; USD 4 Bn.

Having established its leadership in the contracting business, SPML has proven business capabilities in the Water, Energy, Environment and Infrastructure domain, on a Public Private Partnership (PPP) & Build-Own-Operate-Transfer (BOOT) basis.

**Bangalore :** Mfar Silverline Tech Park, 2nd Floor, Plot No.180, EPIP 2nd Phase Whitefield, Bangalore - 560066 Tel: +91 -80 -40520200 Fax: +91 -80 -40956701

**New Delhi :** 4th Floor, Tower - II, NBCC Plaza, Pushp Vihar, Sector - V, Saket New Delhi - 110017 Tel: +91 -11 - 46861200 Fax: +91 -11 - 46861222

**Kolkata :** 22, Camac Street, Block A, 3rd Floor, Kolkata - 700017 Tel: +91 -33 -40091200 Fax: +91 -33 -40091303

**Mumbai :** 206, Marthanda Building, Above Canara Bank, Dr. A.B.Road Worli Naka, Mumbai - 400018 Tel: +91 -22 -24944537 Fax: +91 -22 -24944536

info@spml.co.in  
www.spml.co.in

