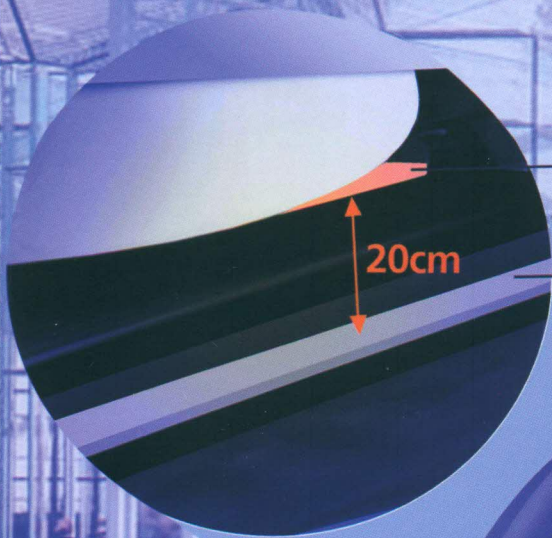


# Efficient Infrastructure

The trade magazine on Infrastructure Technology

## THE FUTURE OF RAILWAY WIRELESS NETWORKS



On-train panel antenna

Waveguide



EI - Interview

**Tilak Raj Seth**  
Executive Vice President and  
Sector Cluster Lead,  
Infrastructure & Cities,  
South Asia, Siemens (P. 18)

**ROUND-TABLE** Trends in building automation P. 22

**FOCUS** Telecom infrastructure P. 26, 30

**SPECIAL FEATURE** Power transmission & distribution P. 34

Market



08 NEWS

12 "INFRASTRUCTURE IS CRITICAL FOR DEVELOPMENT"

Interview with Y R Nagaraja, MD, Ramky Infrastructure

13 "PRESSURE ON CIVIC INFRASTRUCTURE SYSTEMS"

Interview with Rishab Sethi, Executive Director, SPML

Management



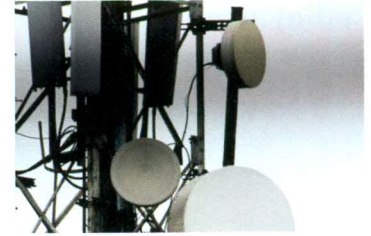
18 "OUR FUTURE CITY NEVER SLEEPS, ITS CYCLE CONTINUES"

Interview with Tilak Raj Sethi, Executive Vice President and Sector Cluster Lead, Infrastructure & Cities, South Asia, Siemens

20 COMPANY PROFILE

**Powering Indian energy needs**  
A feature on Enelek Power's venture in the solar market

Focus



Telecom infrastructure

26 FRESH FUNDS FOR A STALLING ECONOMY  
An article discussing the views of industry experts on 100% FDI in telecom sector

30 BUSINESS MODELS FOR INCLUSIVE GROWTH  
This feature suggests business models in 4 sectors where NOFN implementation can help at the grass root level

SPECIAL FEATURE: POWER T&D

34 IMPERATIVE FOR QUALITY POWER  
A read on new age technologies in power transmission & distribution

COUNTRY FOCUS: GERMANY

56 MOBILITY OF THE FUTURE  
German Federal Ministry of Transportation shares insights into the country's transportation and logistics infrastructure in the future

FOCUS SECTORS

- Construction & structural engineering
- Roads, bridges, railways, airports & av
- Traffic, mobility, transport & logistics
- Energy infrastructure & energy efficien
- Waste management & urban mining
- Telecom infrastructure

# “Pressure on civic infrastructure systems”

**Rishab Sethi** Executive Director, SPML, elaborates on the technology and demand trends in the water management & urban infrastructure and the growth opportunity that he sees in the country, during an interview with Sumedha Mahorey

## Which are the emerging trends in water management and urban infrastructure?

The emerging trend is water cooperation and dialogue between the stakeholders & countries to help bridge the differences. This will support the sharing of knowledge, including data and information exchange, management strategies and best practices in preserving and managing the aspects of water. The other trend is Total Water Management. The dividing line between water and wastewater is rapidly diminishing because of increased attention to the water cycle and the reuse of treated water for many purposes including potable. Advanced technologies that were only used previously for water treatment are now being applied in wastewater treatment and growing demand for water has forced us to depend on reclaimed water for municipal and industrial purposes.

## Which demand trends are shaping up in the infrastructure sector?

India is the second largest urban population in the world. The urban population in India is expected to increase from 370 million in 2010 to 600 million in 2030 and one billion by 2050. The pressure in managing demand, supply and management of urban infrastructure will be immense. City capacity will grow by about 400% in less than 40 years from now. There is a tremendous pressure on civic infrastructure systems like water supply, sewerage and drainage, solid waste management, etc. Looking at the emerging demand, the government has initiated several measures to develop the infrastructure in vital sectors.

## How is the use of efficient technologies helping your company in creating a niche for itself?

SPML has integrated its strength in basic & in-depth engineering, process technology, project management, procurement, fabrication and erection, construction and commissioning to offer distinct responsibility under strict delivery agendas. Many of the engineering and construction projects executed by SPML have set new benchmarks in terms of scale, sophistication and speed. The strategic alliances with offshore technology partners have enabled us to continue our endeavor in giving the best solution to our clients thus creating a niche for ourselves.



## Any major investments plans in the offing?

At present, SPML is executing a number of water distribution and management projects across the country including the Water Supply Project at Aurangabad, one of the largest and most sophisticated PPP projects in the Indian water sector. The projects for the improvement in water distribution networks in Delhi is an ambitious project for us to improve the efficiency of water supply in selected areas of Delhi and SPML will work as long term operators of water distribution systems.

## With sluggish growth in the background and recent support initiatives coming from the government to strengthen Indian infrastructure sector, do you foresee investment and new project development picking up in the coming year?

The Planning Commission has announced infrastructure investments of INR 41 billion during the 12<sup>th</sup> Five Year Plan (2012-2017). The power and highways sectors are expected to continue being the government's main investment focus areas, the urban infrastructure for water & sanitation and telecommunications sectors is also expected to witness enhanced investment. India has devoted substantial resources to the water supply and sanitation sector, significantly increasing its capacity. Today, drinking water investments constitute about 3% of the national budget. The public water supplies in both urban and rural areas have increased significantly and it is estimated that 85% of the urban population has access to public water supplies, whereas only 48% of the urban population and 36% of the rural population has access to sanitation services. But clearly, there is a lot of scope and opportunity to do more. The High Powered Expert Committee (HPEC) Report on Indian Urban Infrastructure and Services estimates (at 2009-10 prices), the per capita investment needed for capital infrastructure in the water, sewerage and storm-water sector at INR 13,329 and another INR 840 annually for operation and maintenance. The total investment estimated for these sector during 2012-2031 will be INR 7,54,627 crore for capital and INR 8,17,671 crore for O&M respectively. Thus, the water supply, sewerage and storm water drainage investments amount to about 24% of all urban sector requirements for capital and 41% for O&M respectively.

> [MORE@CLICK](#) EI000090 |