



Leading Water & Environment Infrastructure Company in India



Company Overview

Water Business Overview

Other Businesses

FY'15 Performance

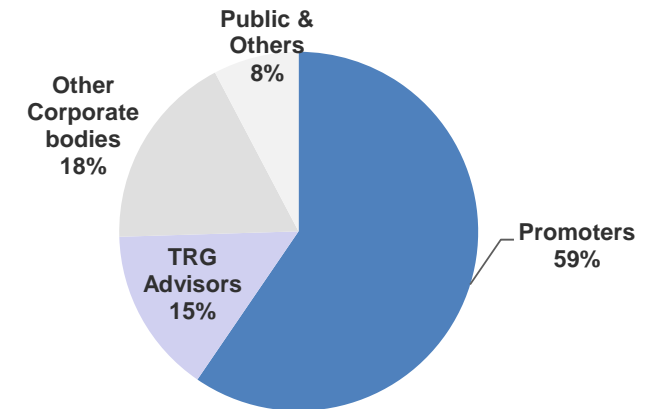
Future Business prospects



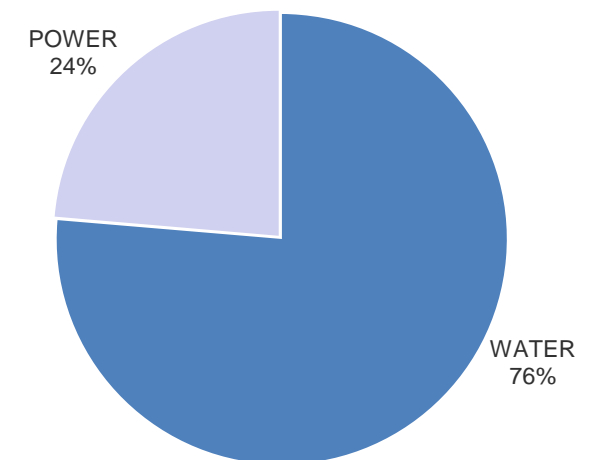
SPML Infra Ltd. - India's Leading Integrated Water Company

- ▶ SPML is a leading infrastructure developer that has managed and implemented over 600 projects across India on an EPC (Engineering, Procurement and Construction), PPP (Public Private Partnership) and BOOT (Build-Own-Operate-Transfer) basis
- ▶ Single source solution provider for multi disciplinary engineering and infrastructure and management services
- ▶ The company has an expertise in providing turnkey end to end water and waste water management solutions
 - ▶ Providing services to more **than 40 Mn Indian Population**
 - ▶ High capability in executing large water & waste water projects
 - ▶ Laid over 10,000 kms of cross country pipeline
- ▶ FY15 Financials – Reported total turnover of INR 19,094 Mn at consolidated level & INR 14,456 Mn at Standalone Level
 - ▶ Q1'2016 – Revenue growth of 26% and Net profit growth of 586% compared to corresponding quarter of previous fiscal.
 - ▶ Currently over 76% of the overall business of the company is from water and waste water segment
- ▶ Total Manpower strength of more than 1200 people
- ▶ An ISO – 9001: 2008 certified company
- ▶ Listed on the Indian Stock Exchanges-BSE & NSE

Company Ownership



EPC Order Book ~ INR 52000 Mn



Areas of Operation

Water & Environment

- Water Treatment Plant
- Water Transmission & Distribution Systems
- Service Reservoirs
- Distribution Schemes
- O&M of Water Supply Schemes
- Solid Waste Management
- Sewage Treatment Plant
- Sewer Rehabilitation
- Effluent Treatment Plant
- Drainage System
- Irrigation Schemes
- Management Contracts

Power

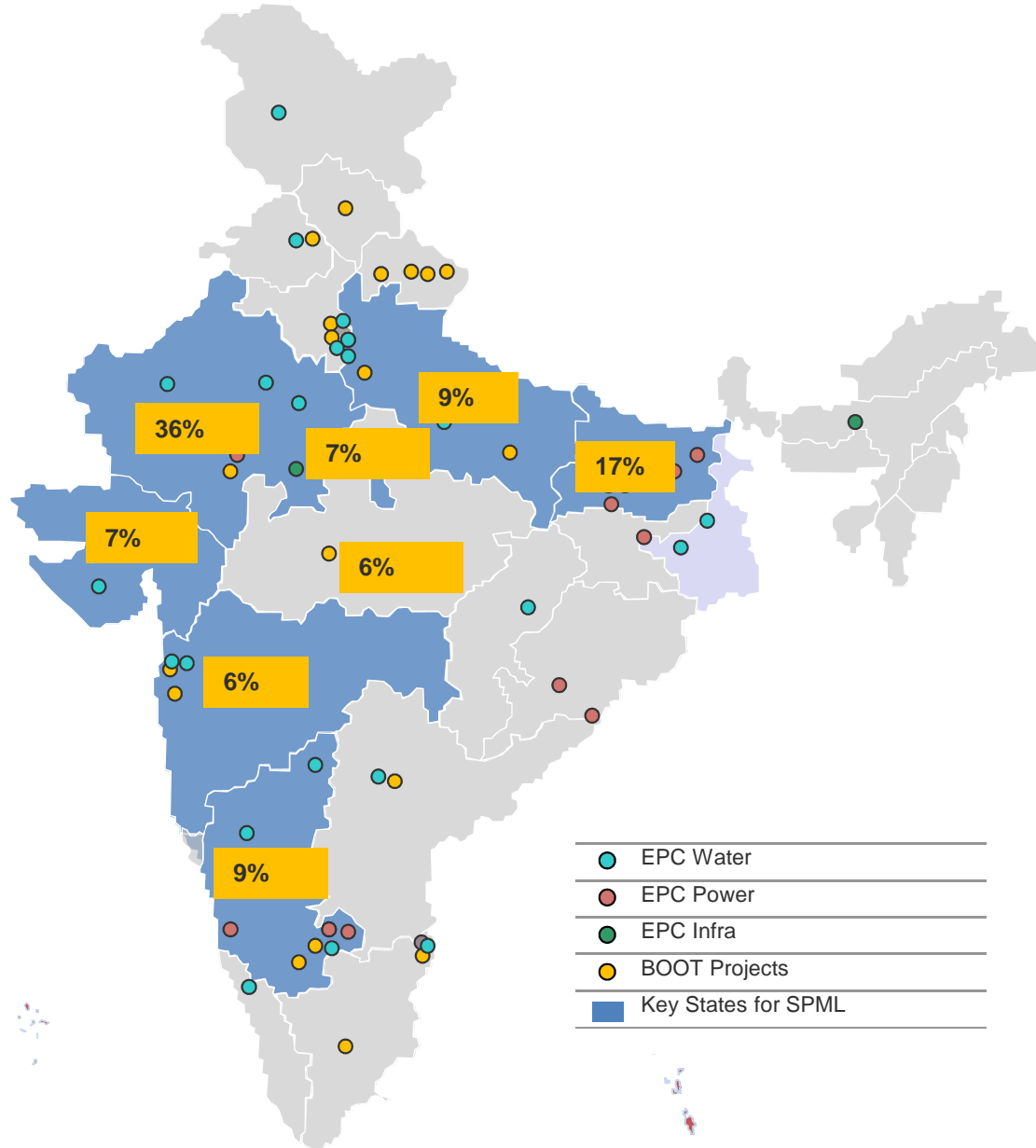
- Power Generation
- Power Transmission & Distribution

Other Business

- Roads
- Mining



Pan India Presence



- EPC Water
- EPC Power
- EPC Infra
- BOOT Projects
- Key States for SPML

- Delhi**
 - Mehrauli Vasant Vihar Water Supply Improvement & Management Scheme
 - 35 MLD Effluent Treatment Plant; 73 MLD Sewage Treatment Plant
 - Delhi Waste Management - collection, transportation and storage (1,500 TPD)
- Uttar Pradesh**
 - Agra Water Transmission project
 - Sewerage network & treatment plant for Kanpur
- Bihar**
 - Power Transmission and distribution in SBPDCL
 - Development of State Highways for Jamui, Saharsa, Supaul & Madhepura
- Maharashtra**
 - Integrated water supply scheme in Aurangabad
 - Sewerage system, treatment plants & pumping stations for Mira Bhayander
 - Kihe Katharpur Lift Irrigation Scheme
- Gujarat**
 - Water supply and transmission project in Saurashtra
 - Sauni Lift Irrigation Scheme
 - 240 MLD capacity STP in Ahmedabad (one of the largest in Asia)
 - Hydro Power Project at Kuchh Brach Canal
- Karnataka**
 - Subhash Kabini 20 MW hydro electric power plant
 - Civil and electromechanical works for pumping stations and reservoirs at TK Halli, Harohalli & Tataguni (BWSSB 3)
 - Construction and O&M of 24X7 Water Supply System for 6 Towns in North Karnataka
- Rajasthan**
 - Pokhran Balotra water supply scheme project
 - Kalisindh Gravity Dam Project; Pokaran Falsund Balotra Siwana Lift Project
 - 200 MLD WTP at Surajpura
 - BOP package of 160 MW at Ramgarh District, Jaisalmer for RRVUNL
 - Toll Road Project at Jaipur Bhilwara

*% - presence in our Total Order book



Water



Power



Infrastructure



Environment



Recognized as one of India's leading Infrastructure Players

Recipient of many national level awards and accolades over the past 5 years...

- **Digitizing India Award 2015** under Smart City Solutions Provider by NDTV & Cisco
- Recipient of “**India's Leading Infrastructure companies 2014**” - Dun & Bradstreet
- **Infrastructure Person of the Year 2014- Mr. Sushil Sethi**
- **Construction Week India Award 2014** for Water Project of the Year – Bangalore Water Supply Project
- **Commendation at Global Water Awards 2014** for Water Project of the Year – Global Water Intelligence, London
- **GMR-IGI Airport Awards 2014** for Operations Service Provider of the Year
- **EPC World Award 2013** for Urban Infrastructure Development – EPC World Media Group
- **Construction Week India Award 2013** for Corporate Social Responsibility
- **Infrastructure Excellence Award 2012** for Water & Sanitation – CNBC TV 18
- **Aqua Excellence Award 2012** for Outstanding Contributions towards cause of Water – Aqua Foundation
- **Most Admired Infrastructure Company in Water and Urban Infrastructure – KPMG Infrastructure Today Awards 2011**



Water



Power



Infrastructure



Environment



Visionary Management Team

Promoters

Anil Sethi – Chairman Emeritus



- ✓ Responsible for the growth of the infrastructure business enabling the Group to foray into several projects in the Public Private Partnership realm; Resides and operates from Bangalore

Subhash Sethi – Chairman



- ✓ Responsible for the growth of the energy business enabling the Group to foray into several BOOT projects in the hydropower and coal mining; Resides and operates from Kolkata

Sushil Sethi – Managing Director



- ✓ Responsible for the growth of the water and environment business enabling the Group to foray into several BOOT projects in the water, wastewater and sewer rehabilitation; Resides and operates from Delhi

Deepak Sethi – Director



- ✓ Instrumental in execution of waste management projects
- ✓ MBA from Deakin University, Australia and now residing in Bangalore

Rishabh Sethi – Executive Director



- ✓ Leads the corporate functions and handles water & environment projects of SPML from Delhi
- ✓ BS, Industrial Engineering and Economics from Northwestern University (Evanston, IL, USA)

Non Executive Board

Sarthak Behuria

- ✓ Former Chairman of Indian Oil Corporation Ltd and Bharat Petroleum Corporation Ltd.
- ✓ Recipient of the SCOPE Award for Excellence & Outstanding Contribution to Public Sector Management (2007-08) from the Honorable Prime Minister of India



P. S. Rana

- ✓ Former Chairman of Housing and Urban Development Corporation (HUDCO)
- ✓ Patron, Institute of Urban Transport and Member Advisory Council of IIT, Delhi
- ✓ B. Tech in Civil from IIT, Delhi and Ph.D. in Transport Engineering and Management from University of Newcastle, UK



Archana Capoor

- ✓ Former Chairman and Managing director with Tourism Finance corporation of India, New Delhi.
- ✓ Member Secretary and Project Advisor to Indian Trust for Rural Heritage and Development (ITRHD)



TS Shiva Shankar (Observer)

- ✓ Vast experience in transaction advisory, private equity financing and portfolio company operations
- ✓ Graduate from IIT-Chennai and IIM-Lucknow



Water



Power



Infrastructure



Environment

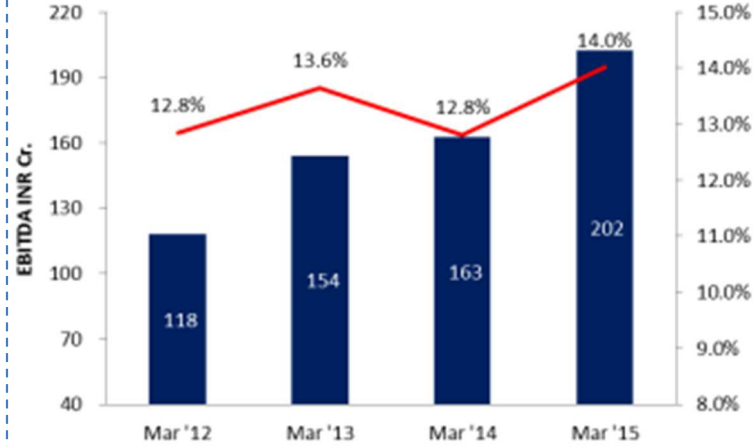


Strategy to focus on core water business

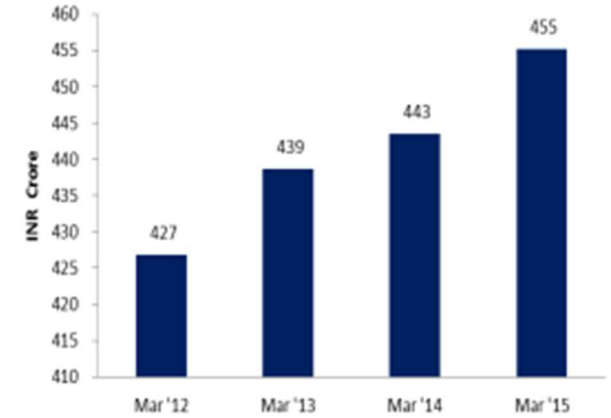
Revenue Growth Trend
INR Cr



EBITDA & EBITDA Margin %

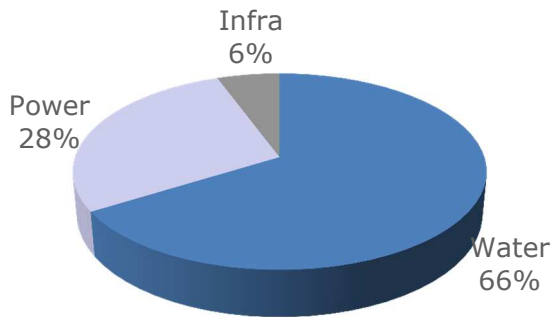


Net worth

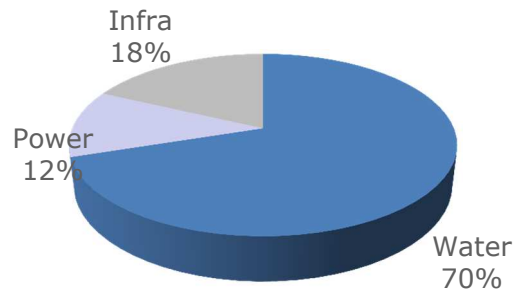


Business Focus shifting towards Water

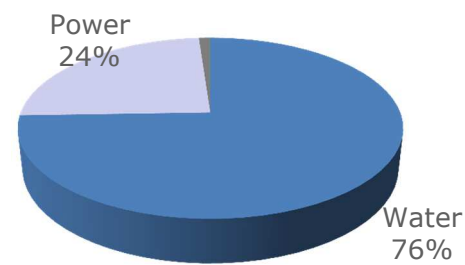
FY13



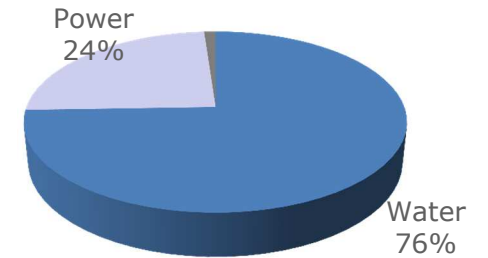
FY14



FY15



Current Order book



Water



Power



Infrastructure



Environment

Emerged as a leading Global and Domestic player in the Sector

- With focus on Water Sector, SPML has emerged as one of the Global and Domestic player
- Only Indian company in Leading 50 Private Water and Waste Water Companies by Population Served, as per GWI.
- **SPML ranked at 28th in 2015 as compared to 40th Rank in 2013.**

2013

Rank	Company	Total population Served (mn)
1	Veolia Environnement	123.5
2	Suez Environnement	118.4
3	Beijing Enterprise Water	48.6
4	Sabesp	28.7
5	Shanghai Industrial Holding	23.6
..
..
40	SPML Infra Ltd	6.1
41	Rosvodokanal	6.1
..
50	Helionjang Interchina Water	4.7

2015

Rank	Company	Total population Served (mn)
1	Suez Environnement	141.9
2	Veolia Environnement	136.5
3	Beijing Enterprise Water	77.03
4	Sabesp	28.4
5	Beijing Capital	23.82
..
..
28	SPML Infra Ltd	8.9
29	Guangdong Investment	8.5
30	Manila Water	8.4
..

...And a dominant position in India Water Market as compared to Global Top Companies - 2015

Sl. No.	Company	Total population Served (mn)
1	SPML Infra	8.9
2	Veolia India Pvt. Ltd	2.5
3	Suez India Pvt. Ltd.	1.9

*Source GWI



Company Overview

Water Business Overview

Other Businesses

FY'15 Performance

Future Business prospects



India Water Sector

Opportunity

- Only **64% of India's urban population** is covered by individual water connections and stand-posts, compared with 91% in China, 86% in South Africa and 80% in Brazil
- **USD 84bn** in capex and **USD 50.6bn** in O&M estimated for continuous and efficient water supply

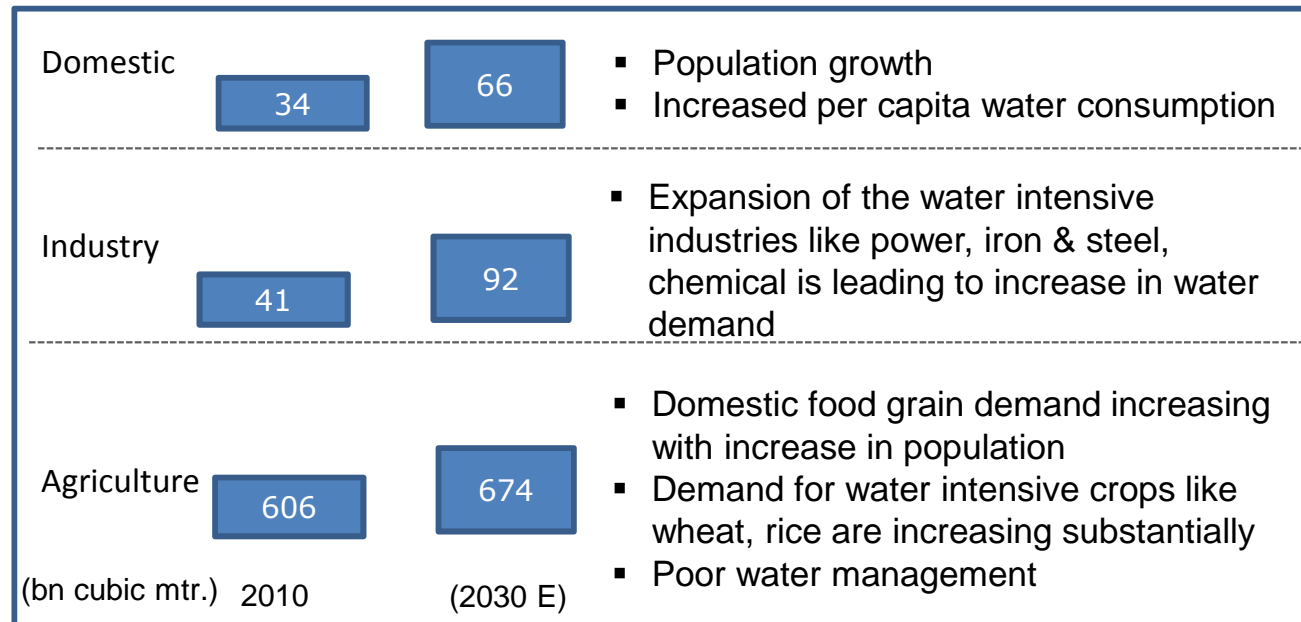
Triggers

- Rising urban population and a below par water supply situation in cities with intermittent supplies, inadequate coverage & low pressure

Significant Inefficiencies Prevail across the Water Value Chain

Parameter	Benchmark	Reality
NRW	< 15 %	>50 %
Per Capita Supply of water (lpcd)	135	37-298
Coverage (Piped Supply)	100%	64%
Duration of water supply	24 Hrs.	1-6 Hrs
Metering	100 %	4%

Sectoral water demand situation and key drivers

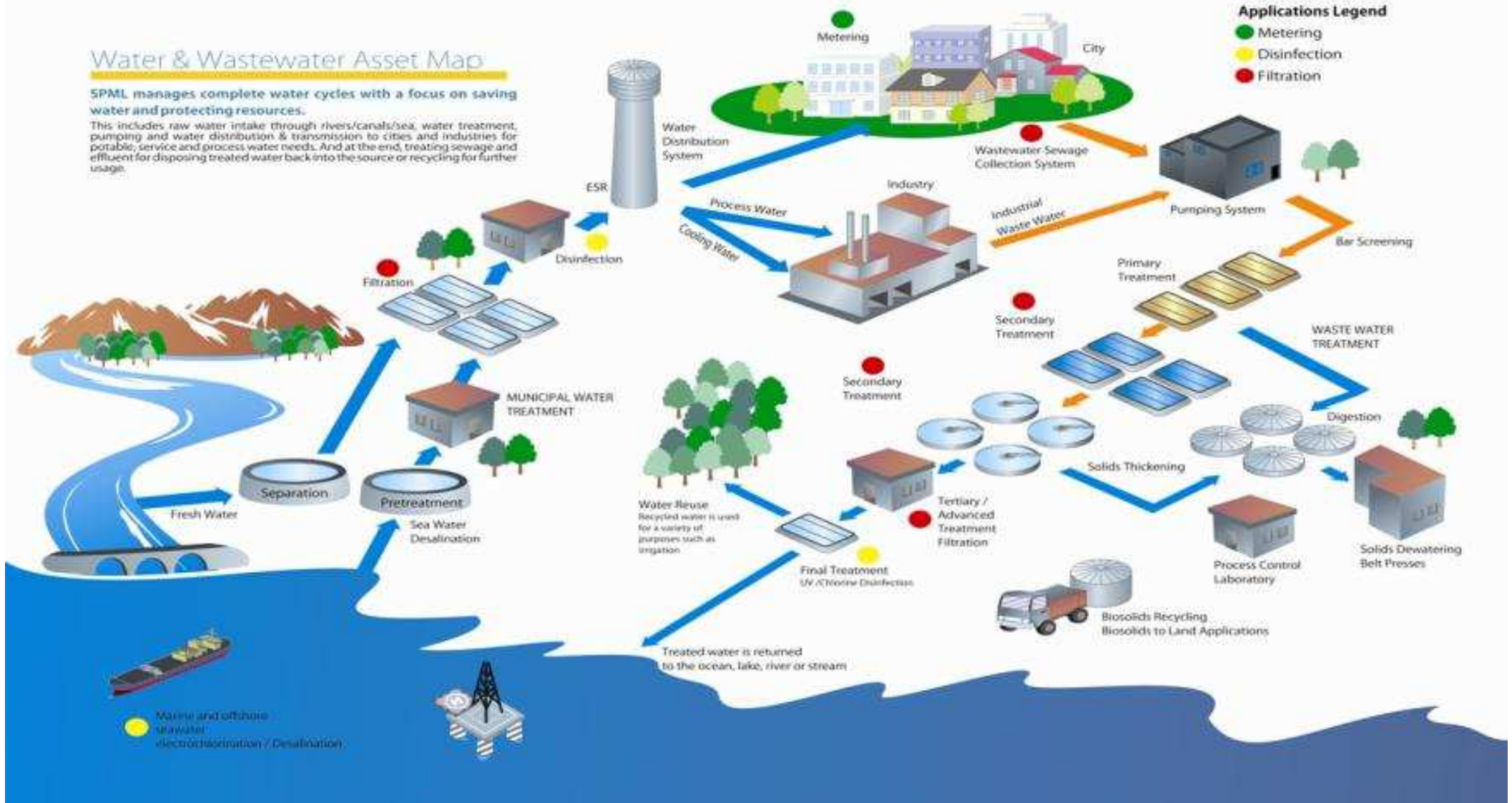


SPML – An integrated water company

Water & Wastewater Asset Map

SPML manages complete water cycles with a focus on saving water and protecting resources.

This includes raw water intake through rivers/canals/sea, water treatment, pumping and water distribution & transmission to cities and industries for potable, service and process water needs. And at the end, treating sewage and effluent for disposing treated water back into the source or recycling for further usage.



Present across the entire Value Chain



Key Water Treatment Plants

WTP	Surajpura	Fatehpur Laxmangarh - VI	Pokhran	Goa Water Supply Scheme	Jalore-Narmada water supply scheme
Location	Rajasthan	Dharnasar	Rajasthan	Goa	Sanchore
Size	200 MLD	160 MLD	125 MLD	100 MLD	100 MLD
Population	2,000,000	1,600,000	1,250,000	1,000,000	1,000,000



Key Pipeline Transmission Projects

Pipeline Projects	Pokhran project	GWIL	Agra Water Transmission project	Nadouti karauli water project	Sauni	BWSSB W5	Fatehpur - VI
Location	Rajasthan	Gujarat	Agra	Gangapur	Gujarat	Karnataka	Rajasthan
Length	358 Km	76 Km	128 Km	1030 Km	40 KM	20 Km	93 Km
Description	MS Pipe – 800 to 1200 Mm GRP – 1000 to 1900mm BWSC – 800 to 1300 MM DI- 150 to 600 MM	MS Pipe 2432 MM 2328 MM	MS Pipe 2100 MM 2800 MM	DI – 100mm to 600mm MS 850 mm UPVC 75-225 mm	MS 3035 mm	MS 2728mm	MS 1500 mm



Key Rural Water Supply Schemes

Rural Water Supply Schemes	Beawar	Niwai	Fatehpur-V	Fatehpur-IV	Nawa
Location	Rajasthan	Rajasthan	Rajasthan	Rajasthan	Rajasthan
No. of Villages Covered	199 villages	191 villages	92 villages	74 villages	72 villages
Population	850000	800,000	400,000	320,000	300,000



Key Waste Water Treatment Plants

Waste Water Treatment Plants	STP Nasik	STP Kanpur	STP Vasna, Ahmedabad	STP Mira Bhayandar
Location	Maharashtra	Uttar Pradesh	Gujarat	Maharashtra
Size	70 MLD	42 MLD	240 MLD	115 MLD
Scope of Work	Design, construction, supply, testing, commissioning, start-up and performance run for the STP and sewage pumping station	Design, construction, supply, erection, testing & commissioning of the STP	Built in 4 Modules of 60 MLD each	Construction of 10 packaged STPs of various capacities ranging from 7 to 17 MLD
Population	1,500,000	3,000,000	7,000,000	1,000,000

India's first Decentralized Sewage Network Installation



Key Urban Water Supply Distribution Project

Project	Mehrauli Vasant Vihar	Malviya Nagar	Integrated Water Supply	Raichur	Central Zone
Location	Delhi	Delhi	Maharashtra	North Karnataka	Bangalore
Concession Period	10 Years	12 Years	20 Years	8 Years	8 Years
Population Covered	350,000	400,000	1,300,000	300,000	500,000

Project	Haveri	Gadag	Sindhanoor	Hospet	Bellary
Location	North Karnataka	North Karnataka	North Karnataka	North Karnataka	North Karnataka
Concession Period	8 Years	8 Years	8 Years	8 Years	8 Years
Population Covered	160,000	200,000	85,000	200,000	500,000

- Asset Management/ Utility based businesses, **differentiating itself from the traditional EPC players**
- No Indian company has qualification/experience and **recession-proof**



Smart Metering Solution

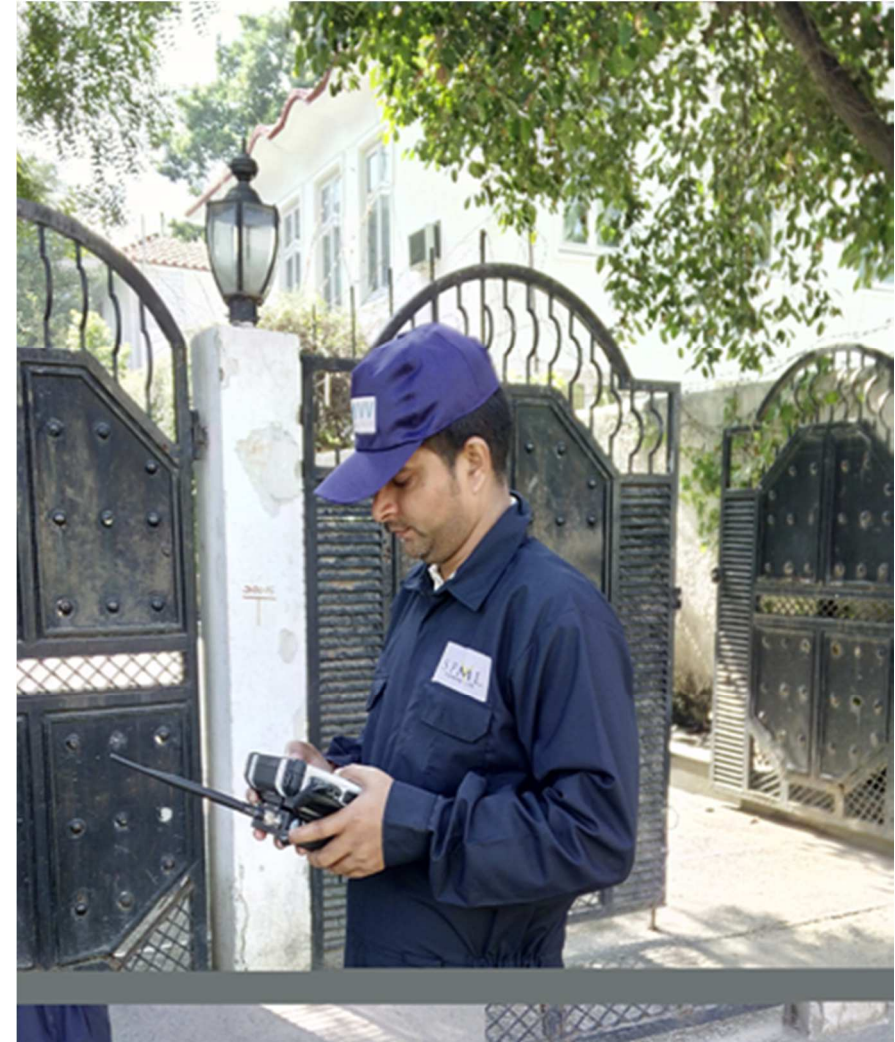
Smart Metering is the advanced metering solution offers enhanced flexibility, reliability and data-driven insights in water resource management.

- Accurate meter reading, no more estimates
- Improved billing
- Accurate profile classes and measurement classes, true costs applied
- Improved security and tamper detection for equipment
- Less financial burden correcting mistakes
- Less accrued expenditure
- Transparency of “cost to read” metering
- Long battery life upto 9 years
- Designed with advanced intelligent microprocessor
- Alerts for leak, back flow, tamper, battery etc.



SPML

- **Installing 1.8 Lac AMR Meters with 7 years of operation & maintenance.**
- **Installing 3000 bulk meters on GPRS technology with 4 years of O&M.**
- **Installing 2.5 Lac Meter in KUIDFC**



Integrated Management Information Software (IMIS)

- IMIS combines all related components of a business into one system for easier management and operation and enable smart decision making.
- SPML has developed in-house software which enable utilities to take real time decision, connects stakeholders with flexible reporting and customized views.



Case Study on Reduction in NRW

Project Name: - “Improvement of Service Level for water supply in Mehrauli & Vasant Vihar project area of Delhi”

Location: - New Delhi, India

Population: – 350,000

Organizing Authority: - Delhi Jal Board

Key Performance Parameters:

- Continuous Water Supply
- Reduction of Non-Revenue Water (NRW) to 15%
- Energy Efficiency
- 100% Connectivity
- Timely Complaints Resolutions
- Improvement in Collection Efficiency



Key Initiative undertaken to achieve Performance Parameters:

Analysis of the present system

- Water Infrastructure Mapping –
- Base Map
- Consumer Survey
- Reframing of suitable water operational zones / DMAs
- Meter management systems
- Inspection of Residence/ House Service Connections
- Energy Efficiency
- 24X7 Customer Service Center

New Pumping Station



Key Achievements in Westend:

- **Non-Revenue Water reduced from 61% to less than 6%**
- Water supply increased from less than 2 hours to 24 hours per day
- Energy consumption has been reduced drastically
- Complaints reduced to almost zero
- Increase in revenue from INR 10 Cr to INR 14 Cr

Old Pumping Station



Water



Power



Infrastructure



Environment

Case Study Hubli Dharwad IMIS

Description: Karnataka Urban Water Supply & Sewage Board maintains water supply distribution to Dharwad City which is located 400 KM from Bangalore Karnataka and 440 Km from Mumbai Maharashtra.

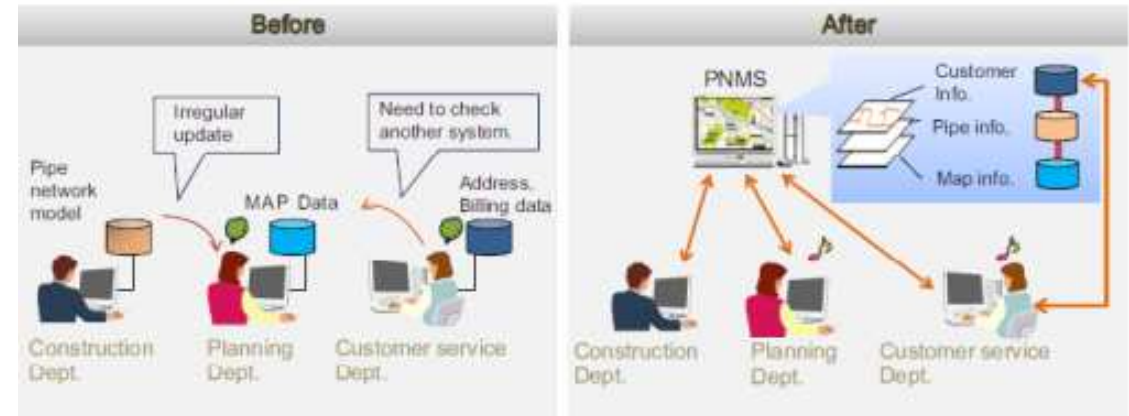


Key Geographies of Dharwad City :

- a) Population = 4,00,000
- b) Area = 88 Sq Km
- b) Amount of drinking water supplied : 75 MLD
- d) Pipe Distribution Network : 700km

Scope of work involved :

- Metering, Billing & Collection for 45000 House Service Connections.
- Implementation of IMIS consisting of Recording & Processing of Maintenance Requests
- Revenue Collection, Debt Management, Meter Reading and Monitoring of flow measurements, Demand forecasting, Load analysis & Dynamic Master Planning of forecasting of Network Components, Suitable cash management and financial accounting,
- NRW, Water loss analysis, pressure management, Network Management with ability to do simulation and Digital Terrain Modeling, Graphical Interface with Zoning/creation of DMA facilities for 45,000 Water connections .
- Data capturing & GIS mapping
- Maintenance of the complete system for 3 years



Benefits and improvements achieved

- Better consumer service leading to better consumer satisfaction.
- Identification of illegal connections and hence reduction in NRW
- NRW reduced from 43% Now – 33%.
- Quick & real time decisions by the department.
- Preventive & Proactive approach on pipe network distribution.
- Increase in revenue for the Department from 3.8 Mn to 7 Mn INR/ month

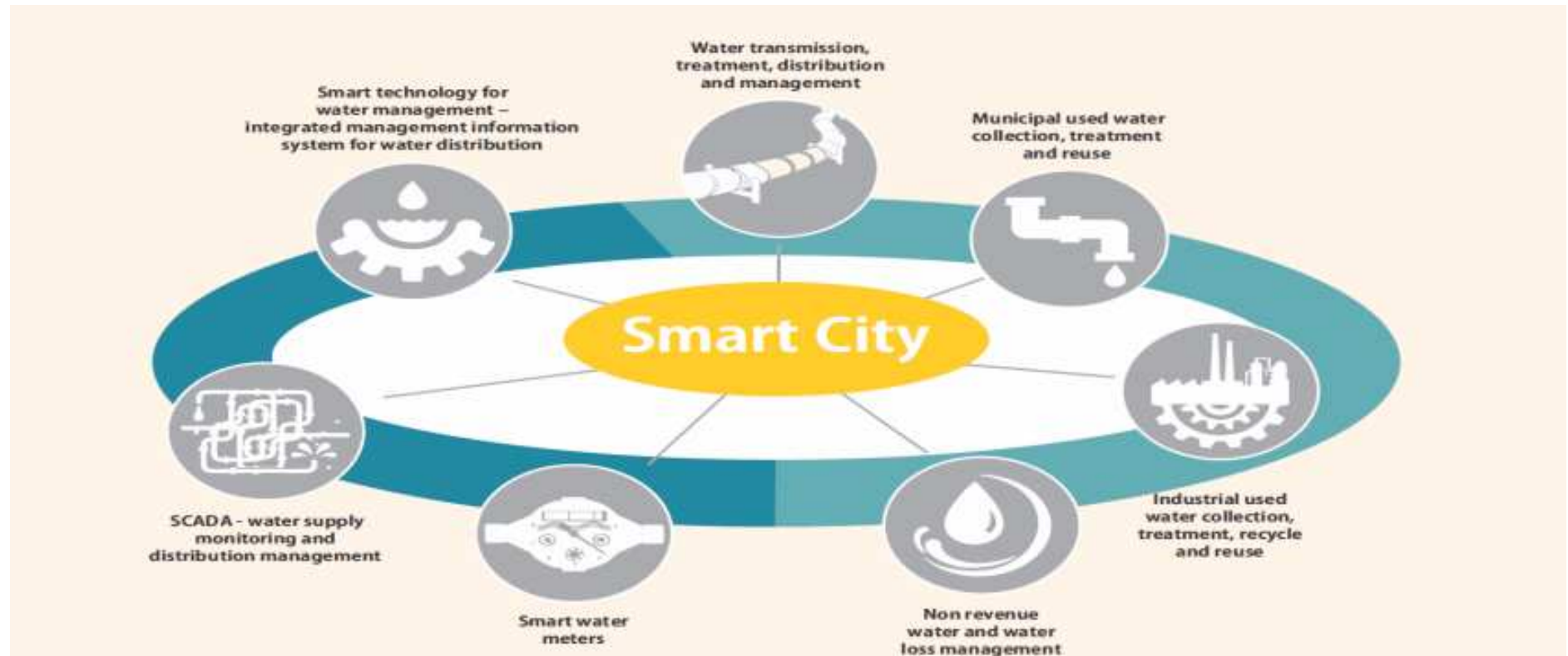


India's First Greenfield Smartcity

SPML has received **very first order to Develop Smart City** on an area admeasuring 1100 acres, "Vikram Udyogpuri" in Ujjain, Madhya Pradesh under **Delhi Mumbai Industrial Corridor (DMIC)**.

Scope Includes

Name of the Project	Infrastructure Works for Vikram Udyogpuri Ltd. (Phase-1)
Client	Vikram Udyogpuri Limited
Value	INR 3326.4 Million
Construction Period	3 Years + 1 Year defect liability
O&M Period	5 Years



Prequalifying references to bid for large projects

- ▶ Drinking water supply and management projects of up to 1200 crore single project
- ▶ Pipeline projects of large diameter (above 2000 mm dia) and length 100 km
- ▶ Water treatment plant projects of upto 400 MLD capacity (expected to go upto 500 MLD in the future)
- ▶ Sewage Treatment Plant projects of upto 500 MLD capacity
- ▶ Pumping stations of all capacities
- ▶ O&M experience of upto 10 yrs for water supply systems
- ▶ Trenchless sewer rehabilitation projects of length 25 km and upto 200 crore
- ▶ City distribution management experience of upto 1 million population.
- ▶ All civil works related to water supply projects- overhead reservoir, underground reservoir, intake etc
- ▶ Sewerage network (including sewer pipeline) projects of length 100 km
- ▶ Common effluent treatment plants of upto 100 MLD capacity



Company Overview

Water Business Overview

Other Businesses

FY'15 Performance

Future Business prospects



Overview

- ➔ ~200,000 rural households across the country benefited through SPML's Power Generation, Transmission and Distribution initiatives
- ➔ SPML provides Turnkey solutions:
 - ✓ T & D Power Project Capabilities
 - ✓ Up to 220 kV substation and transmission lines
 - ✓ 33 / 11 kV feeder development & re-conductoring works
 - ✓ Rural Load Management System (RLMS) works
 - ✓ HT UG cable works

SPML services both power generation and T&D sub segments of the power industry

Key Clients



Signature Projects executed/under execution (INR Mn)

Transmission & Distribution works – Karnataka	6,413
Power projects – Power Grid Corp Ltd	3,115
BOP package of 160 MW power project	2,090
Rural electrification work, Jharkhand	1,100
Rural electrification – Supaul, Bihar	1,083
Maharashtra Goathen Feeder Separation Scheme - (MSEDCL)	912

Coal Mining

- SPML Infra Ltd. through its subsidiaries holds an effective 45.64% stake in PT Bina Insan Sukses Mandiri
- Mining operations have commenced - followed by dispatch of coal to India.
- Production commenced in December 2011. Today production has reached 2 Mn tonnes per year in steady state

Estimated reserves of 105 Mn tonnes

Over an area of 5,000 hectares

Concession period : 20 years

Jetty with loading capacity of 2.5 Mn MT

Mining & Port Area:

Area & Deposits: 5,000 Ha,
Deposit +/- 105 Mn Ton

Production Capacity:

Production capacity 200,000 MT
per month



SPML – Other Segments

Solid Waste Management

Project	TPA
Delhi Waste Management	540,000 TPA
Madurai Waste Management	128,000 TPA
SPML Urban Enviro(Delhi Airport)	7,400 TPA
SPML Urban Enviro(Hyderabad Airport)	3,000 TPA

Hydro Power

Project	Generation Capacity
Subhash Kabini Power Corporation Ltd.	20 MW
4 mini Hydel Power projects in Himachal Pradesh	18 MW

Infra Projects

Project	Value (INR mn)
Bhilwara Toll Road(BOT)	340

No further Investment required in any of the BOOT projects



Company Overview

Water Business Overview

Other Businesses

FY'15 Performance

Future Business prospects



PARTICULARS	Q1 FY16	Q1 FY15	QoQ %	Q4 FY15	FY15	FY14
Net Sales / Income from Operations	343	271	26%	555	1361	1046
Other Operating Income	2	4	(31%)	3	16	138
Total Income from Operations (I)	345	275	26%	558	1377	1185
Materials Consumed & Direct Cost	274	224	22%	483	1125	936
Purchase of traded goods	0	0		0	0	17
Change in WIP & traded goods	3	0		2	3	2
Employee Benefit	14	12	13%	13	50	42
Depreciation and Amortization	3	3	(3%)	3	13	10
Other Expenditure	15	10	53%	34	65	108
Total Expenses(II)	309	249	24%	536	1256	1116
Profit from Operation before Other Income, Finance Cost , Exceptional Items and tax	36	26	40%	22	121	69
Other Income	15	16		35	69	84
Profit/(Loss) before finance cost but before Exceptional Items and tax	51	42	25%	57	189	152
Finance cost	44	41	8%	50	172	147
Profit/(Loss) before Tax	8	1	120%	7	17	5
Current Tax	2	0		4	3	0
Net Profit/(Loss) after Tax	6	1	586%	3	14	5



Company Overview

Water Business Overview

Other Businesses

FY'15 Performance

Future Business prospects



Projects expected in FY 2016

State	Project	No. of Packages	Client	Estimated Cost (Cr)
Telangana	Providing drinking water to various districts of Telangana with O&M of 10 years	10	RWSS, PRED	9062
Multiple States	Sewerage related works for construction of STP & Sewerage Network National Mission for Cleaning of Ganga	14	NMCG	4000
Rajasthan	Integrated Projects for Drinking Water supply on 24X7 basis & Sewerage for various Towns with O&M of 10 yrs	7	RUIDP	3500
Multiple States	Development of Integrated Urban Infrastructure works for New Cities/ Rehabilitation of existing areas under Delhi Mumbai Industrial Corridor: Dholera, Aurangabad & Noida	3	DMIC	3300
Bihar	24X7 Water Supply Schemes for various towns of Bihar under ADB assistance with 10 yrs of O&M	6	BUIDCO	2300
Rajasthan	Rehabilitation of Existing Drinking Water Distribution system for various towns of Rajasthan	12	PHED	2000
Delhi	Construction, Rehabilitation & Up gradation of old STPs under Yamuna Action Plan	7	DJB	2000
Maharashtra	Waste Water Treatment Plants	5	MCGM	1600
Gujarat	Transmission Lines & pumping Stations works for different region of Gujarat with O&M for 5 Years	4	GWIL & SSNL	1300
Karnataka	Contracts for Operator for Cost Effective and Sustainable Up-scaling of Continuous (24x7) Pressured Water Supply, its Operation and Management for 10 years	3	KUIDFC	1000
Tamil Nadu	24X7 Water Supply Scheme for complete Coimbatore city with 10 yrs of O&M	1	Coimbatore Corporation	600
Delhi	Drinking water scheme under command areas of Chandrawal Water Treatment Plant	1	DJB	350
TOTAL		73		31,012



Water



Power



Infrastructure



Environment

Core Competencies

- **Pre qualifications** to meet all large scale Indian water project requirements
- Over **3 decades of experience** and a pan India presence
- Highly **experienced promoters & professional mgmt. team**
- Strong long term **relationships with central & state water bodies**
- Executed some of the **largest / marquee projects in India**
- Recipient of over many **national level awards & accolades** over the past 5 years
- Excellent track record of **successfully executing projects with international partners**
- Significant **Brand Presence** across India
- Separate Business Unit for Catering to Niche Sector, i.e., **Asset Management/ Utility based business model**



Initiatives taken by the government, which will boost Sector Dynamics

- For the enhancement of Quality of Urban Life and providing a clean & sustainable environment, minimum **Rs. 200,000 crore** would flow into urban areas over the next five years (2015-16 – 2019-20) in the following Schemes approved by Central Government:
 - **100 Smart Cities Mission – 48,000 Cr**
 - **Atal Mission for Rejuvenation and Urban Transformation of 500 cities (AMRUT) – Rs 50,000 Cr**

States and urban local bodies need to mobilize matching resources of Central Government

- **Ganga River Cleaning – Total Investment Rs 35000 Cr** - Object of the program is to ensure abatement of pollution and conservation of river to overcome following challenges:
 - ▶ STPs built are not working
 - ▶ Growing Gap of sewage treatment, Installed and Uninstalled Capacity – Gap of 80%
 - ▶ STPs are ineffective due to lack of connectivity
 - ▶ Sewerage generated is underestimated
 - ▶ Cities Lack fund & efficiency

Another key areas where huge investment will be done by Govt. in the coming years

- **Delhi Mumbai Industrial Corridor**
- **Interlinking of Rivers**
- **Irrigation Schemes**



Contact Us

Gurgaon (Head Office)

SPML House, Plot No. 65, Sector-32, Institutional Area,
Gurgaon, Haryana - 122001

Ph: +91- 124-3944555 Fax: +91- 124-3983201

Regional Offices

Kolkata

22, Camac Street, Block A, 3rd Floor, Kolkata - 700017

Ph: +91-33-39445555 Fax: +91-33-40091303

Bangalore

No. 8/2, Ulsoor Road, Bangalore - 560042

Ph: +91-80 -39445555 Fax: +91- 80-40956701

Mumbai

2nd Flr, Arihant Darshan Building, Bhayander West – 401101

Ph: +91- 22 - 24944537 Fax: +91- 22- 24944536

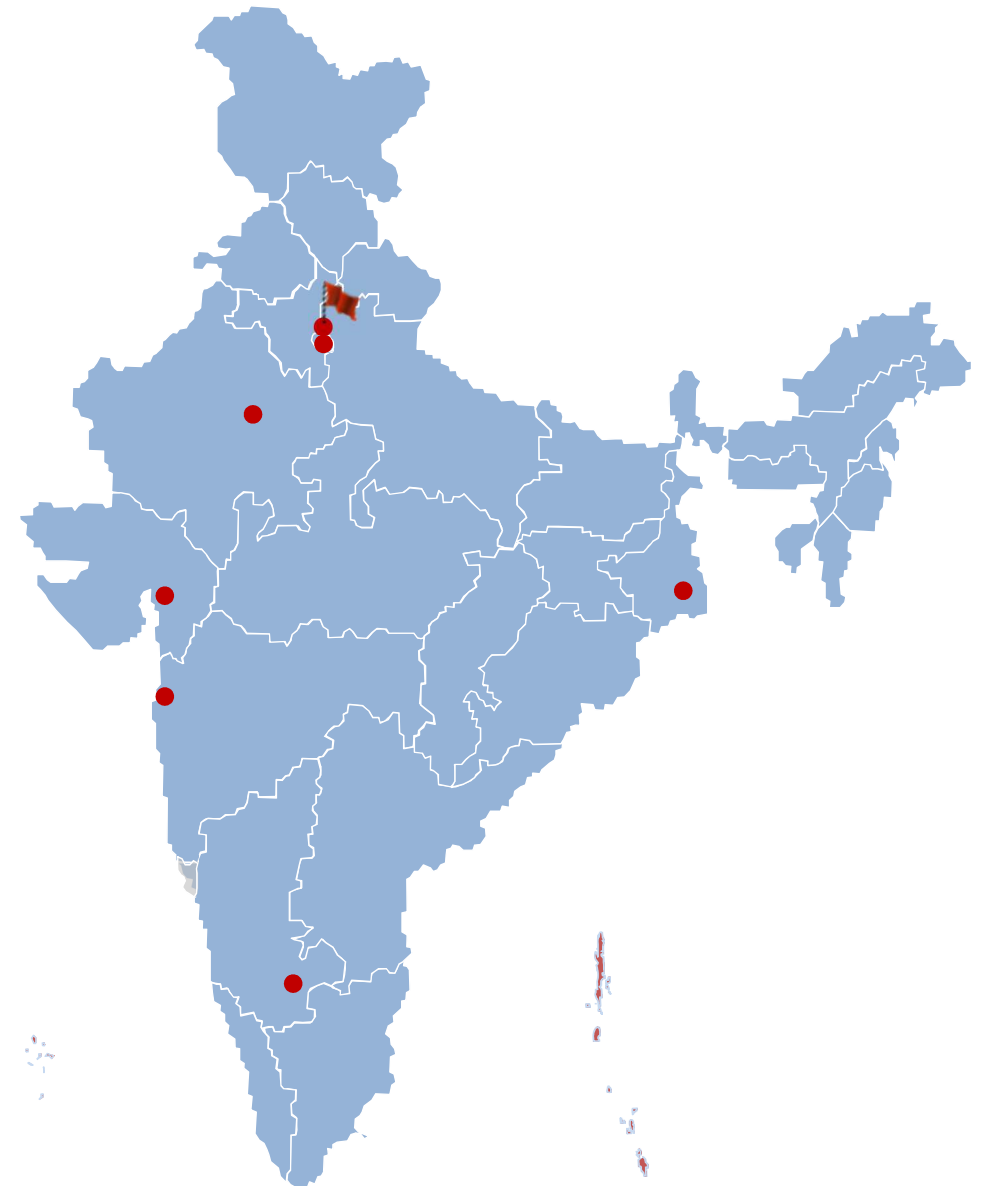
Jaipur

OM Tower, 3rd Floor, Church Road, M I Road, Jaipur - 302 001

Ph: +91 141 2371887, Fax: +91 141 2371887

Ahmedabad

405, Kataria Arcade, S G Highway- Ahmedabad



info@spml.co.in | www.spml.co.in



THANK YOU

