

Smart City Development Project

Delhi Mumbai Industrial Corridor - Vikram Udyogpuri, Ujjain

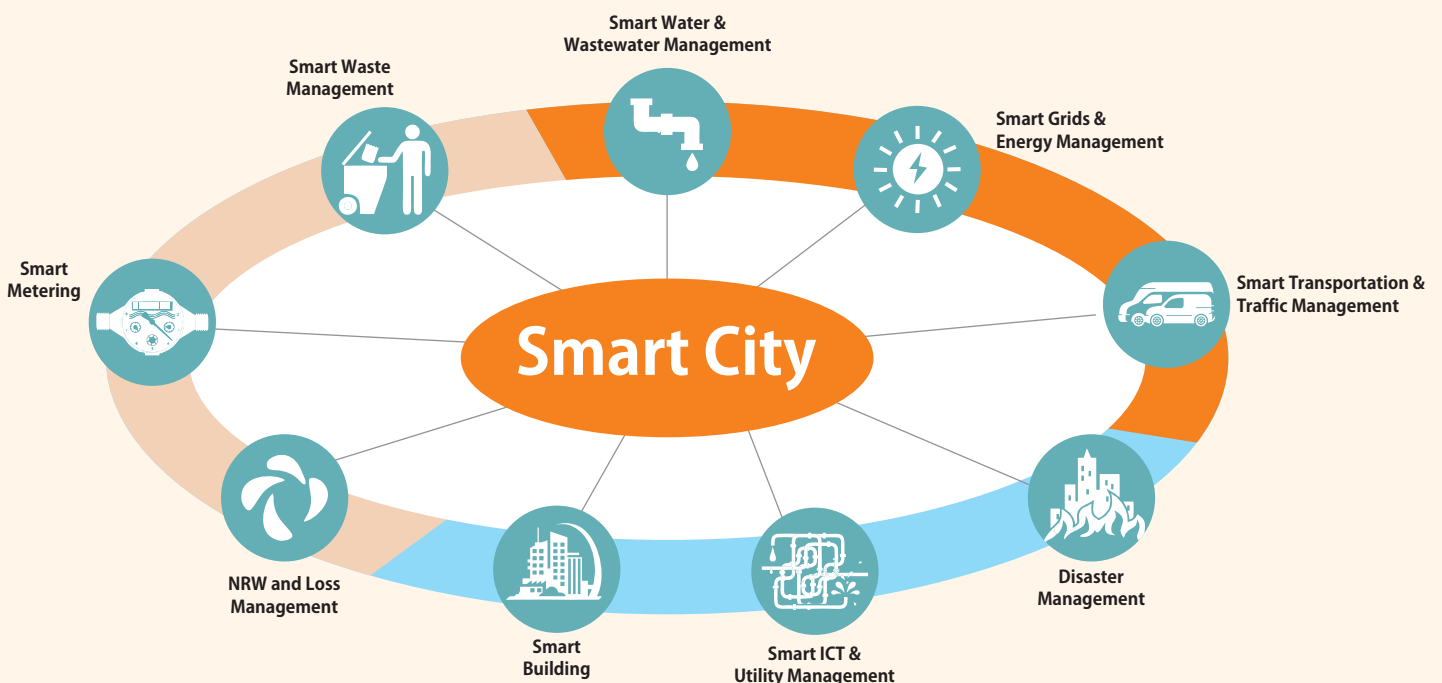
Project	Smart City Development
Client	Vikram Udyogpuri Limited, Madhya Pradesh (Govt. of India Enterprise)
Value	INR 3326.4 Million
Construction Period	3 Years
O&M Period	5 Years

PROJECT AT A GLANCE:

The Government of India is developing the Delhi-Mumbai Industrial Corridor (DMIC) as a global manufacturing and investment destination. This early bird project is part of development plan of Pithampur-Dhar-Mhow Investment Region, one of the 24 such regions, being developed under DMIC. The development of Vikram Udyogpuri has been selected by the Government of Madhya Pradesh (GoMP) and DMICDC to be developed as a Smart City. The proposed site of is located about 8 km from Ujjain and 12 km from Dewas and has a total area of 1100 acres.

Under this project scheme, SPML Infra with its consortium partner, Om Metals Infraprojects will be developing smart

infrastructures for 24X7 water supply with water treatment plant and pumping station, water supply conveyance from Shipra river to the site, complete sewerage network with sewage treatment plants, storm water drainage system, solid waste management system, internal and external roads of 4 and 6 lanes, power transmission and distribution system, domestic gas distribution system, street lighting, CCTV and SCADA system, safety and security system, information and communication technology (ICT) network with peripheral boundary walls. This is first of its kind of smart city project which will have all smart utility connected with technology for seamless services.



SCOPE OF WORK:



Water Infrastructure

- 10 MLD water treatment plant
- 11.10 Kms raw water transmission line
- 3500 KL clear water and 1000 & 2500 KL recycled water reservoir
- 8 Mtr internal dia and 16.5 Mtr height raw water intake
- 10.80 MLD raw water and clear water pumping station
- 17.7 Kms drinking water network of 80-300 mm dia of DI pipe
- 1600 KL capacity overhead tank
- 300 x 300 mm to 2500 x 2000 mm dia water collection system, deepening of 3 ponds of 100 Mtr to 300 Mtr dia and construction of one new earthen pond of 20 Mtr dia for rain water harvesting



Wastewater Infrastructure

- 5.2 MLD tertiary treatment plant on SBR technology
- 2.1 MLD tertiary treatment plant on MBBR technology
- 26.3 MLD sewage pumping stations
- 7 MLD recycled water pumping station
- 16.7 Kms of 150-600 mm dia HDPE pipe for waste water collection system
- 11 Kms of 250 mm dia HDPE pipe network for treated water distribution system
- 16.04 Kms storm water drainage system



Power Infrastructure

- 33 Kv compact substations with switch board, cable terminations, AMF control panel, all electrical installations and lighting system
- 11 Kms street lighting at 45 Mtr distance on 6 lane road and 30 Mtr & 24 Mtr distance on 4 lane roads with light poles, LED light fixtures, high mast with panel, LT cabling etc.



Civil Infrastructure

- 17.1 Kms road of 4 & 6 lanes with service road, culverts, bridges, pavements, sensor pavers
- Real time traffic management system
- 11 Kms 0.5 Mtr wide domestic gas distribution system with RCC utility trench
- Fire station with underground tank, pump house and fire tender vehicles
- Administration building of 1000 sq Mtr with ICT control centre, bank extension counter, cafeteria, cyber café and other amenities
- 36 Kms boundary wall



Sanitation

- 10 TPD compost plant including complete solid waste management system with facilities for collection, treatment, processing and final disposal
- Transportation vehicles, weigh bridge, fire fighting, land fill and landscaping



Information & Communication Technology

- SCADA and PLC
- Centralized command & control centre
- IT/Telecom facilities with routers, main optical distribution frames, 42 U cabinets etc.
- Security systems including CCTV & access control centralized servers, CCTV network video recording & storage devices, video display wall
- Fibre optic network to each individual plot with cabinets and distribution frames



SPML Infra Limited

Corporate Office:

SPML House, Plot No. 65, Sector-32, Institutional Area
Gurgaon - 122001, Haryana
Tel: +91-124-3944555 Fax: +91-124-3983201
info@spml.co.in, www.spml.co.in

Offices in Bangalore, Chennai, Kolkata, Mumbai