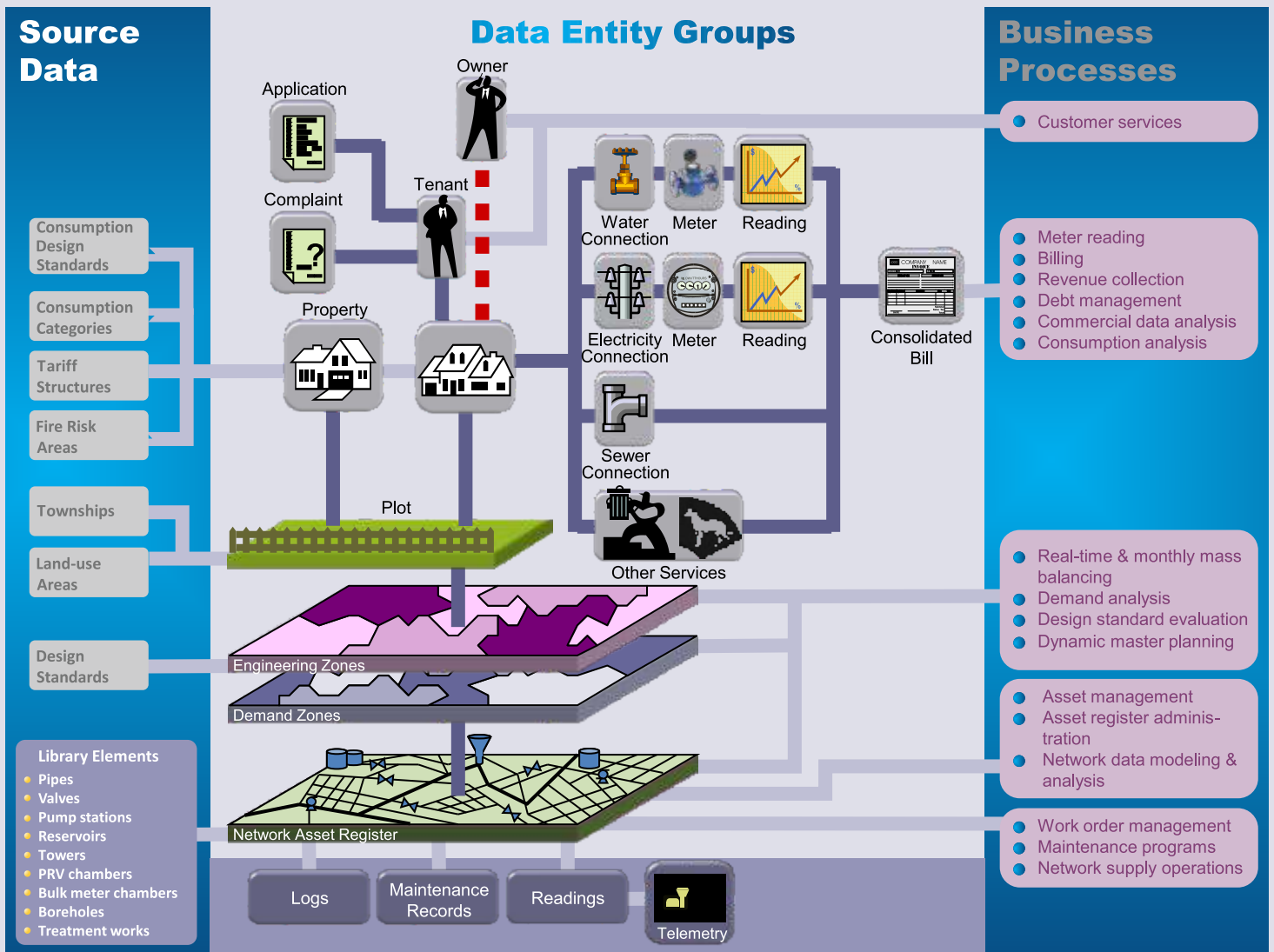


Integrated Management Information System for Water Utilities

SPMLAqua Overview


- Developed based on SPML's rich experience of last 3 decades in utility
- Simple yet powerful web based enterprise management tool
- Designed to meet day to day operations of water utilities.
- Enables water distribution utilities to take real time decisions
- Connects stake holders.
- Flexible reporting and customized views.
- Developed on robust Microsoft technologies platform and Oracle Spatial Database.





Benefits of SPMLAQUA

- SPMLAqua is a fully supported Commercial off the Shelf (COTS) system .
- Modular System- Scales as per operation
- Real Time Monitoring, Controlling & Reporting
- Can be easily integration to any SCADA & Telemetry systems.
- Interactive & Customized Dashboard
- Interface with MS SQL, My SQL, SAP, Oracle & Asset System.



Core Water Utility Functions
Customers, Meeting, Work




Foundation
Servers, Storage, Database, Security




Business Applications
Assets, Supply Chain, Staff, Financials, Projects



Enterprise Wide Analysis
Business Intelligence & Analytics

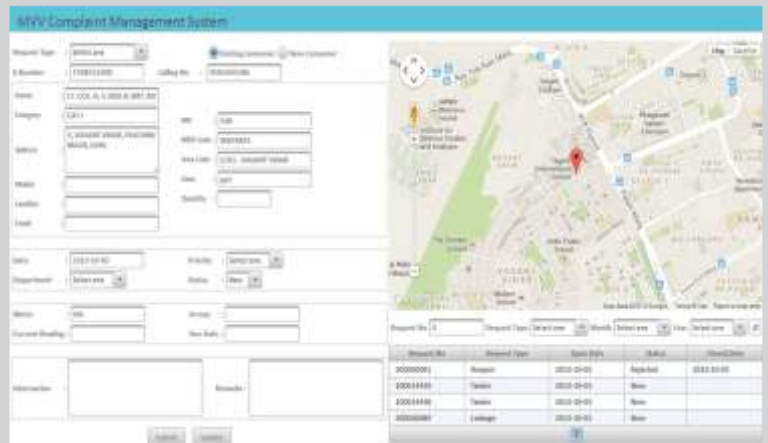


Integration
Across Applications, Analytics, Technology, Hardware



Optimize

- Low Outage
- Low Operational Expenses
- Improved OoS



Managing complete operations of the water distribution utility

Finance Management

- General Ledger
- Accounts Payable
- Accounts Receivable
- Bank Management
- Asset Accounting

Billing

- Billing Engine
- Tariff Management
- Rules Engine
- Printing Engine
- Offline Data Management

Customer Information System

- Commercial Database
- Customer Service
- Consumer Portal
- Complaint Management
- Consumer Contact Service Centre
- Collection Centre

Demand Management

- Town Planning
- NRW Analysis
- Demand Analysis & Forecasting
- Capital Plan Asset Management
- Asset Creation
- Asset Movement & Tracking
- Depreciation Models

Operation & Maintenance

- Preventive Maintenance
- Breakdown Maintenance

GIS & Network Analysis

- Network Analysis for Water & Sewer
- Network Designing
- Simulation
- Schematics
- Digital Terrain Modeling

Material Management

- Spares Master
- Spares Procurement, Receipt & Issue

Human Resource Management (Employee Framework)

- Employee Master
- Organization Structure
- Roles & Responsibilities
- Employee Skills

Business Intelligence

- MIS Reports
- Role Based Dashboard
- Analysis



User Management System



Meter Management System



Operations and Maintenance



Fleet Management System



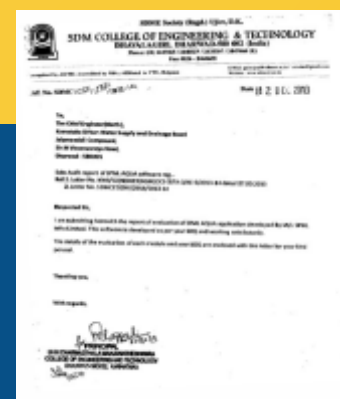
Work Bench Testing



Inventory

Certifications

SPML AQUA has been successfully audited and certified by Autonomous University Board- SDM College of Engineering & Technology.



Case Studies

Karnataka Urban Water Supply & Drainage Board



Description

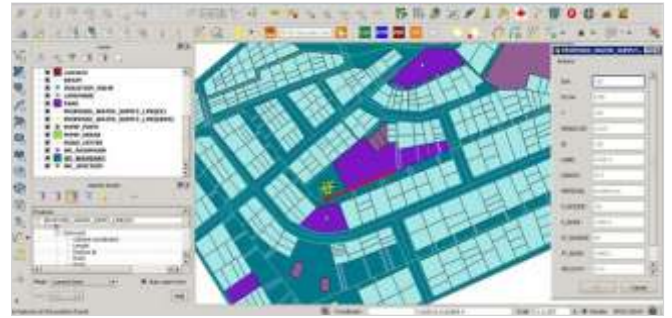
Karnataka Urban Water Supply & Sewage Board maintains water supply distribution to Dharwad City which is located 400 KM from Bangalore Karnataka and 440 Km from Mumbai Maharashtra.

Key Geographies of Dharwad City :

- Population = 4,00,000
- Area = 88 SqKm
- Amount of drinking water supplied : 75 MLD
- Pipe Distribution Network : 700km

Scope of work involved

- Metering, Billing & Collection for 45000 House Service Connections.
- Revenue Collection, Debt Management, Meter Reading and Monitoring of flow measurements, Demand forecasting, Load analysis & Dynamic Master Planning of forecasting of Network Components, cash management and financial accounting, recording & processing of maintenance requests.



- NRW, Water loss analysis, pressure management, Network Management with ability to do simulation and Digital Terrain Modeling, Graphical Interface with Zoning/creation of DMA facilities for 45,000 Water connections .
- Data capturing & GIS mapping
- Maintenance of the complete system for 3 years

Benefits and improvements achieved

- Better consumer service leading to better consumer satisfaction.
- Identification of illegal connections and hence reduction in NRW.
- Quick & real time decisions by the department.
- Preventive & Proactive approach on pipe network distribution.
- Increase in revenue for the Department.



Description

Delhi Jal Board – water body of Delhi government, in order to improve the quality of distribution proposed to privatize Meharuli, Vasant Vihar Areas for Continuous Pressure 24x7 water supply.

Scope of work involved

SPML AQUA was implemented to manage- water supply management, data management of house service connections, consumer complaint management, inventory and human resource management in Delhi for Mehrauli-Vasant Vihar water supply for 42000 water connections



Benefits and improvements achieved

- Enhanced consumer satisfaction.
- Real time decision by the department.
- Better turn around time for resolving complaints
- Surge in revenue for the Department.

SPML AQUA is currently managing Meter Readings, Consumer Relation Management (CRM), Operation & Maintenance etc. for 70,000 AMR meters installed in Delhi by DJB.

- Faster and accurate meter reading
- Real time alerts on leaks, tampering etc.
- Increase in revenue collection
- Better & improved consumer service



SPMLAQUA

SPML House, Plot No. 65, Sector-32 Institutional Area Gurgaon - 122001, Haryana

Tel: +91-124-3944555, 3838300, Fax: +91-124-3983201,

Email: info@spml.co.in, spmlaqua@spml.co.in; Website: www.spml.co.in